

FOR LEASE

12018 South Elm Street

Jenks, OK 74037

Retail Space



PROPERTY FEATURES

- \$20.00/SF Modified Gross Lease
- 1,050 SF Available
- Former Restaurant Space
- Excellent Visibility and Frontage along Elm
- Monument and Building Signage available
- Fellow tenants include Daylight Donuts and Dry Clean
- Adjacent to the high traffic 121st & Elm Intersection
- Nearby Highway 75 and Creek Turnpike



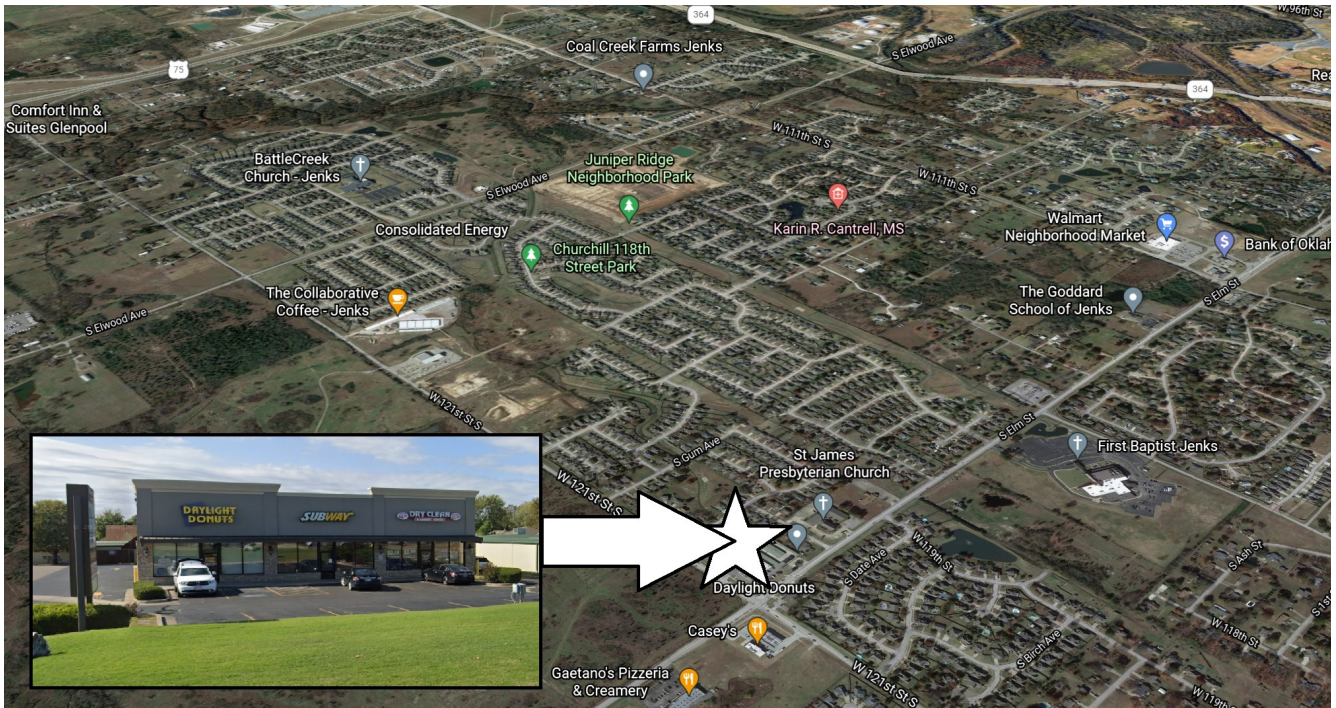
CONTACT US

Jordan Helmerich, JD
Vice President of Retail/Specialty Uses
918-688-0746
Jordan@LegacyCPAdvisors.com

www.legacycpadvisors.com

 **LEGACY**
COMMERCIAL PROPERTY ADVISORS

RETAIL SPACE FOR LEASE



©2021 Legacy Commercial Property Advisors. All rights reserved. This information has been obtained from sources believed reliable, but has not been verified for accuracy or completeness. You should conduct a careful, independent investigation of the property and verify all information. Any reliance on this information is solely at your own risk. Photos herein are the property of their respective owners. Use of these images without the express written consent of the owner are prohibited.